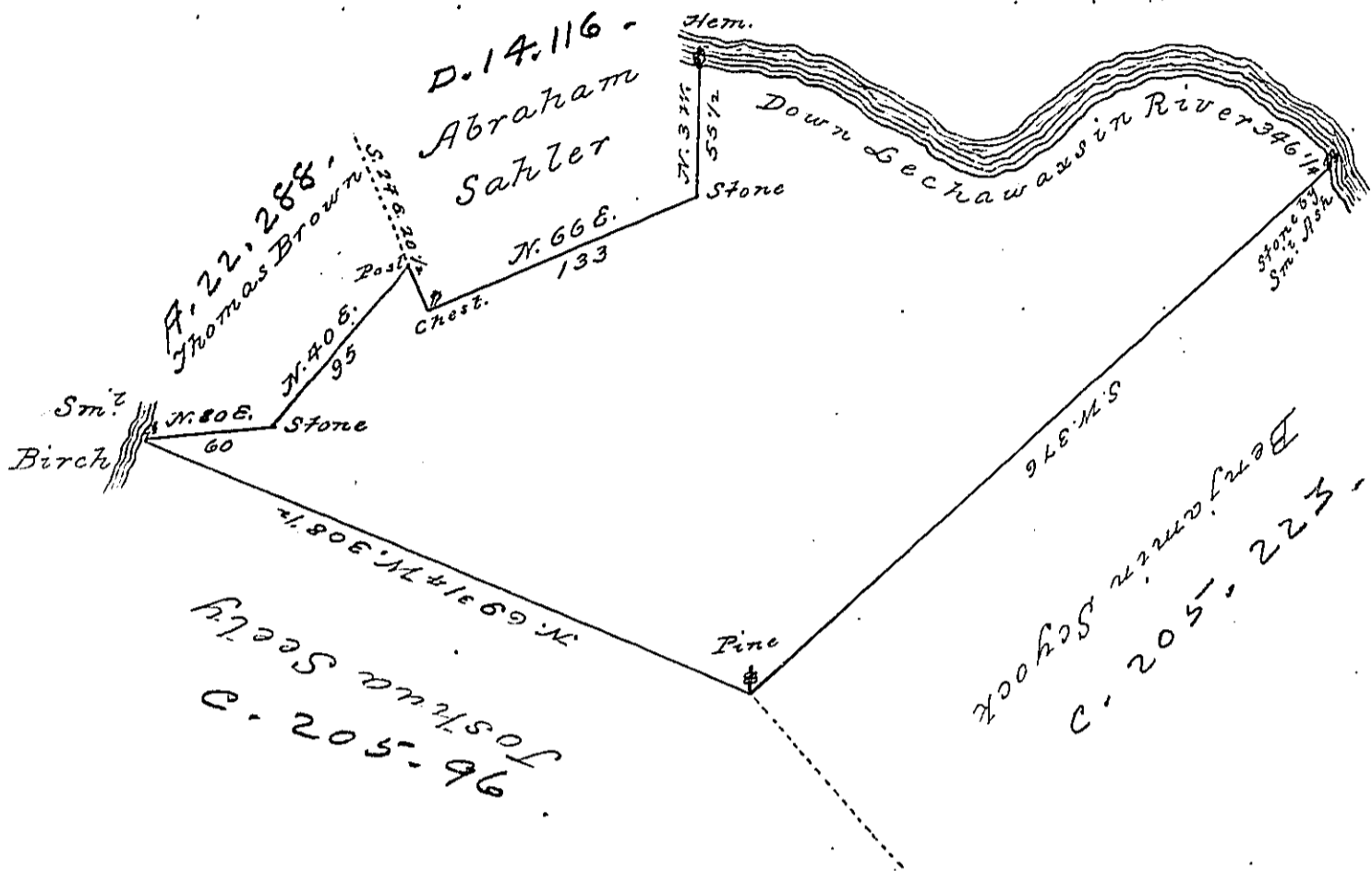


Bearing & Distance down Lechawassin are.	
1. S. 85 E. 18	
2. N. 76 E. 16	
3. N. 80 E. 8	
4. S. 80 E. 10	
5. S. 70 E. 14	
6. S. 58 E. 20	
7. S. 65 E. 52	
8. S. 81 E. 16	
9. N. 78 E. 67	
10. N. 75 E. 52	
11. S. 75 E. 20	
12. S. 63 E. 50	
13. S. 28 E. 6 1/4	
376 1/4	



By Virtue of a Warrant dated the 2^d May 1792 Surveyed the 3^d June 1792 to John Nicholson the above described Tract of land situate on the South side of Lechawassin River about a mile above the falls & below the mouth of Wallingpaupack in the County of Northampton County containing 442 acres 60 perches and the Allowance of Six Cent &c^a

Daniel Brodhead Esquire }
 Surveyor General }

Geo. Palmer D. S.

IN TESTIMONY that the above is a copy of the original remaining on file in the Department of Internal Affairs of Pennsylvania, made conformably to an Act of Assembly approved the 16th day of February, 1833, I have hereunto set my Hand and caused the Seal of said Department to be affixed at Harrisburg, this

Third day of November 1896

James W. Patton
 Secretary of Internal Affairs.